

Braindump2go Free 70-412 Exam PDF Instant Download (281-290)

MICROSOFT OFFICIAL: New Updated 70-412 Exam Questions from Braindump2go 70-412 PDF Dumps and 70-412 VCE Dumps! Welcome to Download the Newest Braindump2go 70-412 VCE&PDF Dumps: <http://www.braindump2go.com/70-412.html> (392 Q&As) Important News: Microsoft 70-412 Exam Questions are been updated recently! Braindump2go offers the latest up-to-date 70-412 Dumps for free instant download which helps you pass 70-412 Exam in a short time! Our 70-412 Exam Dumps has two version: 70-412 PDF Dumps,70-412 VCE Dumps! Choose one of them according to your own need! 100% New 70-412 Exam Questions from Microsoft Official Exam Center! 100% Pass Microsoft 70-412 Exam! Exam Code: 70-412Exam Name Configuring Advanced Windows Server 2012 ServicesCertification Provider: MicrosoftCorresponding Certifications: MCSA: Windows Server 2012, MCSE: Desktop Infrastructure, MCSE: Private Cloud, MCSE: Server InfrastructureKeywords:70-412 Dumps,70-412 Exam Questions,70-412 Book,70-412 E-Book,70-412 PDF,70-412 VCE,70-412 Configuring Advanced Windows Server 2012 R2 Services,70-412 Braindump,70-412 Study Guide,70-412 Practice Tests,70-412 Practice Exams

Configuring Advanced Windows Server 2012 R2 Services Exam: 70-412



Product Description
Exam Number/Code: 70-412
 *Configuring Advanced Windows Server 2012 R2 Services is a Microsoft Certified Exam. Braindump2go has the latest 70-412 exam questions and answers for Microsoft Certification Exam.

Questions and Answers : 392 Q&As
 Updated: Sep 22, 2015
 \$429.99 **\$99.99**

[PDF DEMO](#)
[CHECK OUT](#)
 Printable PDF

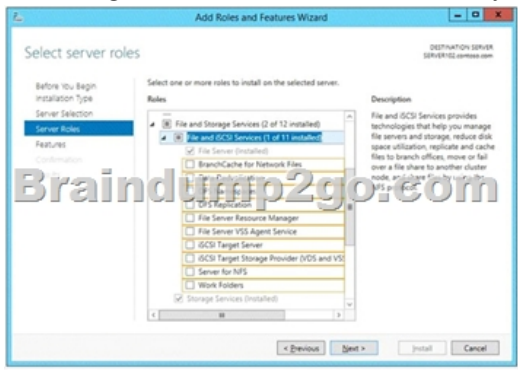
QUESTION 281 You have a server named Server1. You install the IP Address Management (IPAM) Server feature on Server1. You need to provide a user named User1 with the ability to set the access scope of all the DHCP servers that are managed by IPAM. The solution must use the principle of least privilege. Which user role should you assign to User1? A. DNS Record Administrator Role B. IPAM DHCP Reservations Administrator Role C. IPAM Administrator Role D. IPAM DHCP Administrator Role
Answer: D
Explanation: The IPAM DHCP administrator role completely manages DHCP servers.

| Type | Name | Description |
|--------------|--------------------------------------|---|
| Role | DNS record administrator | Manages DNS resource records |
| Role | IP address record administrator | Manages IP addresses but not IP address spaces, ranges, blocks, or subnets. |
| Role | IPAM administrator | Manages all settings and objects in IPAM |
| Role | IPAM ASM administrator | Completely manages IP addresses |
| Role | IPAM DHCP reservations administrator | Manages DHCP reservations |
| Role | IPAM DHCP scope administrator | Manages DHCP scopes |
| Role | IPAM MSM administrator | Completely manages DHCP and DNS servers |
| Access scope | Global | By default, all objects in IPAM are included in the global access scope. All additional scopes configured are subsets of the global access scope. |

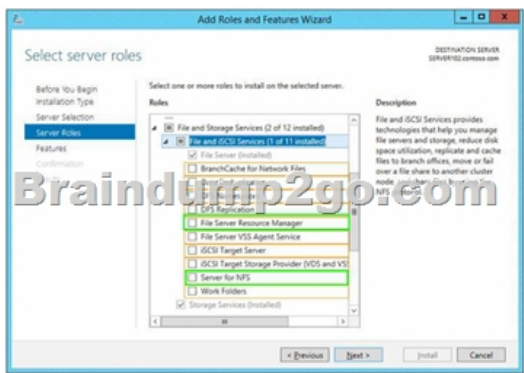
QUESTION 282 Your network contains an Active Directory forest named contoso.com. Users frequently access the website of an external partner company. The URL of the website is <http://partners.adatum.com>. The partner company informs you that it will perform maintenance on its Web server and that the IP addresses of the Web server will change. After the change is complete, the users on your internal network report that they fail to access the website. However, some users who work from home report that they can access the website. You need to ensure that your DNS servers can resolve partners.adatum.com to the correct IP address immediately. What should you do? A. Run dnscmd and specify the CacheLockingPercent parameter. B. Run Set-DnsServerGlobalQueryBlockList. C. Run ipconfig and specify the Renew parameter. D. Run Set-DnsServerCache. **Answer: D**
Explanation: <http://technet.microsoft.com/en-us/library/jj649852.aspx> Run Set-DnsServerCache with the -LockingPercent switch. dnscmd technically works also. **QUESTION 283** You have a virtual machine named VM1 that runs on a host named Host1. You configure VM1 to replicate to another host named Host2. Host2 is located in the same physical location as Host1. You need to add an additional replica of VM1. The replica will be located in a different physical site. What should you do? A. From VM1 on Host2,

click Extend Replication.B. On Host1, configure the Hyper-V settings.C. From VM1 on Host1, click Extend Replication.D. On Host2, configure the Hyper-V settings. Answer: AExplanation:

<http://blogs.technet.com/b/virtualization/archive/2013/12/10/hyper-v-replica-extend-replication.aspx> Once that is done, go to replica site and from Hyper-V UI manager select the VM for which you want to extend the replication. Right click on VM and select ?Replication->Extend Replication?. This will open Extend Replication Wizard which is similar to Enable Replication Wizard. <http://technet.microsoft.com/en-us/library/dn551365.aspx> <http://technet.microsoft.com/en-us/library/jj134240.aspx> NOTE: You configure a server to receive replication with Hyper-V Manager, in this situation the replica site is assumed to be the Replica Server. Therefore you extend replication from VM1 on Host2. QUESTION 284 Hotspot Question You have a file server named Server1 that runs Windows Server 2012 R2. You need to ensure that you can use the NFS Share - Advanced option from the New Share Wizard in Server Manager. Which two role services should you install? To answer, select the appropriate two role services in the answer area.



Answer:

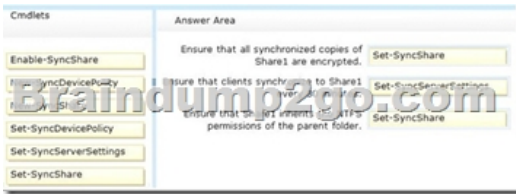


QUESTION 285 Your network contains 20 iSCSI storage appliances that will provide storage for 50 Hyper-V hosts running Windows Server 2012 R2. You need to configure the storage for the Hyper-V hosts. The solution must minimize administrative effort. What should you do first? A. Install the iSCSI Target Server role service and configure iSCSI targets. B. Install the iSNS Server service feature and create a Discovery Domain. C. Start the Microsoft iSCSI Initiator Service and configure the iSCSI Initiator Properties. D. Install the Multipath I/O (MPIO) feature and configure the MPIO Properties. Answer: B Explanation:

<http://technet.microsoft.com/en-us/library/cc753442.aspx> <http://technet.microsoft.com/en-us/library/cc772568.aspx> QUESTION 286 Drag and Drop Question You have a server that runs Windows Server 2012 R2. You create a new work folder named Share1. You need to configure Share1 to meet the following requirements:- Ensure that all synchronized copies of Share1 are encrypted. - Ensure that clients synchronize to Share1 every 30 minutes. - Ensure that Share1 inherits the NTFS permissions of the parent folder. Which cmdlet should you use to achieve each requirement? To answer, drag the appropriate cmdlets to the correct requirements. Each cmdlet may be used once, more than once, or not at all. You may need to drag the split bar between panes or scroll to view content.



Answer:



QUESTION 287 You create a new virtual disk in a storage pool by using the New Virtual Disk Wizard. You discover that the new virtual disk has a write-back cache of 1 GB. You need to ensure that the virtual disk has a write-back cache of 5 GB. What should you do?
 A. Detach the virtual disk, and then run the Resize-VirtualDisk cmdlet.
 B. Detach the virtual disk, and then run the Set-VirtualDisk cmdlet.
 C. Delete the virtual disk, and then run the New-StorageSubSystemVirtualDisk cmdlet.
 D. Delete the virtual disk, and then run the New-VirtualDisk cmdlet.
 Answer: D
 Explanation: You must set the write-back cache during the initial new disk creation. This setting is not configurable once the VHD has been created.

QUESTION 288 Drag and Drop Question Your network contains an Active Directory domain named contoso.com. The domain contains a server named Server1 that runs Windows Server 2012 R2. You plan to install the Active Directory Federation Services server role on Server1 to allow for Workplace Join. You run nslookup enterprise registration and you receive the following results:

```
Server: dcl.contoso.com
Address: 192.168.0.100
Server: dcl.contoso.com
Address: 192.168.0.70
Aliases: enterpriseregistration.contoso.com
```

You need to create a certificate request for Server1 to support the Active Directory Federation Services (AD FS) installation. How should you configure the certificate request? To answer, drag the appropriate names to the correct locations. Each name may be used once, more than once, or not at all. You may need to drag the split bar between panes or scroll to view content.



Answer:



QUESTION 289 Your network contains an Active Directory domain named contoso.com. The domain contains servers named Server1 and Server2 that run Windows Server 2012 R2. Server1 has the Active Directory Federation Services server role installed. Server2 is a file server. Your company introduces a Bring Your Own Device (BYOD) policy. You need to ensure that users can use a personal device to access domain resources by using Single Sign-On (SSO) while they are connected to the internal network. Which two actions should you perform? (Each correct answer presents part of the solution. Choose two.)
 A. Enable the Device Registration Service in Active Directory.
 B. Publish the Device Registration Service by using a Web Application Proxy.
 C. Configure Active Directory Federation Services (AD FS) for the Device Registration Service.
 D. Create and configure a sync share on Server2.
 E. Install the Work Folders role service on Server2.
 Answer: AC

QUESTION 290 Drag and Drop Question You have two failover clusters named Cluster1 and Cluster2. All of the nodes in both of the clusters run Windows Server 2012 R2. Cluster1 hosts two virtual machines named VM1 and VM2. You plan to configure VM1 and VM2 as nodes in a new failover cluster named Cluster3. You need to configure the witness disk for Cluster3 to be hosted on Cluster2. Which three actions should you perform in sequence? To answer, move the appropriate three actions from the list of actions to the answer area and arrange them in the correct order.




Answer:

| Answer Area | |
|---|---|
| | On Cluster2, install the File Server role service. |
| On Cluster1, add a SCSI hard disk drive to VM1 and VM2. | On Cluster2, install the Scale-Out File Server for application data (Scale-Out File Server) option. |
| | On Cluster2, install the File Server for general use option. |

Thanks For Trying Braindump2go Latest Microsoft 70-412 Dumps Questions! Braindump2go Exam Dumps ADVANTAGES:?
100% Pass Guaranteed Or Full Money Back! Instant Download Access After Payment! One Year Free Updation! Well Formated: PDF,VCE,Exam Software! Multi-Platform capabilities ? Windows, Laptop, Mac, Android, iPhone, iPod, iPad. Professional, Quick, Patient IT Expert Team 24/7/3392 Onlinen Help You! We served more than 35,000 customers all around the world in last 5 years with 98.99% PASS RATE! Guaranteed Secure Shopping! Your Transcations are protected by Braindump2go all the time! Pass any exams at the FIRST try!

Configuring Advanced Windows Server 2012 R2 Services

Exam: 70-412



Product Description Exam Number/Code: 70-412

Exam Number/Code: 70-412

"Configuring Advanced Windows Server 2012 R2 Services Exam", also known as 70-412 exam, is a Microsoft Certification. With the complete collection of questions and answers, Braindump2go has assembled to take you through 392 Q&As to your 70-412 Exam preparation. In the 70-412 exam resources, you will cover every field and category in Microsoft Others Microsoft Certification helping to ready you for your successful Microsoft Certification.

Questions and Answers : 392 Q&As

Updated: Sep 22, 2015

~~\$129.99~~ **\$99.99**

[PDF DEMO](#)

[CHECK OUT](#)

Printable PDF **Premium VCE + VCE Simulator**

Free Demo Download

Braindump2go offers free demo for 70-412 exam (Configuring Advanced Windows Server 2012 R2 Services Exam). You can check out the interface, question quality and usability of our practice exams before you decide to buy it.

FREE DOWNLOAD: NEW UPDATED 70-412 PDF Dumps & 70-412 VCE Dumps from Braindump2go:
<http://www.braindump2go.com/70-412.html> (392 Q&A)