

## New Published Microsoft 70-412 Exam Dumps Free Download from Braindump2go! (211-220)

MICROSOFT OFFICIAL: New Updated 70-412 Exam Questions from Braindump2go 70-412 PDF Dumps and 70-412 VCE Dumps! Welcome to Download the Newest Braindump2go 70-412 VCE&PDF Dumps: <http://www.braindump2go.com/70-412.html> (392 Q&As) 2015 Latest released Microsoft Official 70-412 Practice Exam Question Free Download From Braindump2go Now! All New Updated 392 Questions And Answers are Real Questions from Microsoft Exam Center! Exam Code: 70-412 Exam Name Configuring Advanced Windows Server 2012 Services Certification Provider: Microsoft Corresponding Certifications: MCSA: Windows Server 2012, MCSE: Desktop Infrastructure, MCSE: Private Cloud, MCSE: Server Infrastructure Keywords: 70-412 Dumps, 70-412 Exam Questions, 70-412 Book, 70-412 E-Book, 70-412 PDF, 70-412 VCE, 70-412 Configuring Advanced Windows Server 2012 R2 Services, 70-412 Braindump, 70-412 Study Guide, 70-412 Practice Tests, 70-412 Practice Exams

Configuring Advanced Windows Server 2012 R2 Services

Exam: 70-412



**Product Description**  
**Exam Number/Code:** 70-412  
\*Configuring Advanced Windows Server 2012 R2 Services Exam is a Microsoft Certified Exam. Braindump2go has the latest and most accurate questions and answers for the 70-412 exam. Microsoft Certification Exam.

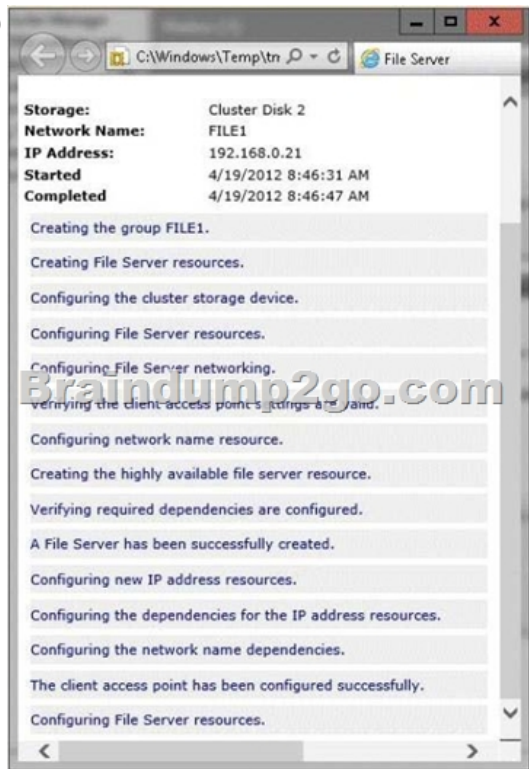
Questions and Answers : 392 Q&As  
Updated: Sep 22, 2015  
\$429.99 **\$99.99**

[PDF DEMO](#)

[CHECK OUT](#)

Printable PDF

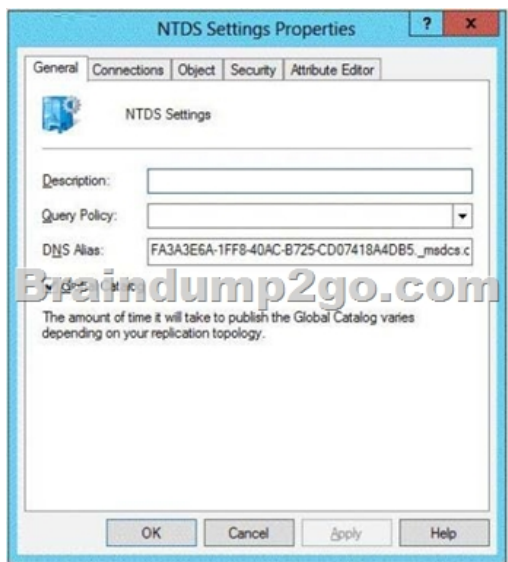
QUESTION 211 Your network contains an Active Directory domain named contoso.com. The domain contains two servers named Node1 and Node2. Node1 and Node2 run Windows Server 2012 R2. Node1 and Node2 are configured as a two-node failover cluster named Cluster2. The computer accounts for all of the servers reside in an organizational unit (OU) named Servers. A user named User1 is a member of the local Administrators group on Node1 and Node2. User1 creates a new clustered File Server role named File1 by using the File Server for general use option. A report is generated during the creation of File1 as shown in the exhibit. (Click the Exhibit button.)



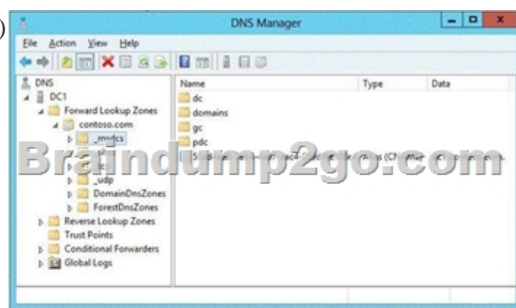
File1 fails to start. You need to ensure that you can start File1. What should you do? A. Log on to the domain by using the built-in Administrator for the domain, and then recreate the clustered File Server role by using the File Server for general use option. B. Recreate the clustered File Server role by using the File Server for scale-out Application data option. C. Assign the computer account permissions of Cluster2 to the Servers OU. D. Assign the user account permissions of User1 to the Servers OU. E. Increase the value of the ms-DS-MachineAccountQuota attribute of the domain. Answer: B Explanation: \* You can deploy and configure a clustered file server by using either of the following methods: / Scale-Out File Server for application data / File Server for general use \* Scale-Out File Server is a feature that is designed to provide scale-out file shares that are continuously available for file-based server application storage. Scale-out file shares provides the ability to share the same folder from multiple nodes of the same cluster. QUESTION 212 Your network contains two servers named Server1 and Server 2. Both servers run Windows Server 2012 R2 and have the Hyper-V server role installed. Server1 hosts a virtual machine named VM1. The virtual machine configuration files and the virtual hard disks for VM1 are stored in D: VM1. You shut down VM1 on Server1. You copy D: VM1 to D: VM1 on Server2. You need to start VM1 on Server2. You want to achieve this goal by using the minimum amount of administrative effort. What should you do? A. Run the Import-VMInitialReplication cmdlet. B. Create a new virtual machine on Server2 and attach the VHD from VM1 to the new virtual machine. C. From Hyper-V Manager, run the Import Virtual Machine wizard. D. Run the Import-IscsiVirtualDisk cmdlet. Answer: C QUESTION 213 Your network contains an Active Directory forest. The forest contains one domain named adatum.com. The domain contains three domain controllers. The domain controllers are configured as shown in the following table.

Domain controller name	Operating system
DC1	Windows Server 2003
DC2	Windows Server 2008 R2
DC3	Windows Server 2008 R2
DC4	Windows Server 2012

DC2 has all of the domain-wide operations master roles. DC3 has all of the forest-wide operation master roles. You need to ensure that you can use Password Settings objects (PSOs) in the domain. What should you do first? A. Uninstall Active Directory from DC1. B. Change the domain functional level. C. Transfer the domain-wide operations master roles. D. Transfer the forest-wide operations master roles. Answer: A QUESTION 214 Your network contains an Active Directory forest named contoso.com. The forest contains three domains. All domain controllers run Windows Server 2012 R2. The forest has a two-way realm trust to a Kerberos realm named adatum.com. You discover that users in adatum.com can only access resources in the root domain of contoso.com. You need to ensure that the adatum.com users can access the resources in all of the domains in the forest. What should you do in the forest? A. Delete the realm trust and create a forest trust. B. Delete the realm trust and create three external trusts. C. Modify the incoming realm trust. D. Modify the outgoing realm trust. Answer: D QUESTION 215 Your network contains an Active Directory domain named contoso.com. The domain contains a certification authority (CA). You suspect that a certificate issued to a Web server is compromised. You need to minimize the likelihood that users will trust the compromised certificate. Which two actions should you perform? (Each correct answer presents part of the solution. Choose two.) A. Stop the Certificate Propagation service. B. Modify the validity period of the Web Server certificate template. C. Run certutil and specify the -revoke parameter. D. Run certutil and specify the -deny parameter. E. Publish the certificate revocation list (CRL). Answer: CE Explanation: First revoke the certificate, then publish the CRL. QUESTION 216 Your network contains an Active Directory domain named contoso.com. The domain contains two domain controllers named DC1 and DC2 that run Windows Server 2012 R2. DC1 and DC2 fail to replicate Active Directory information. You confirm that DC1 and DC2 have network connectivity. The NTDS Settings of DC2 are configured as shown in the NTDS Settings exhibit. (Click the Exhibit button.)



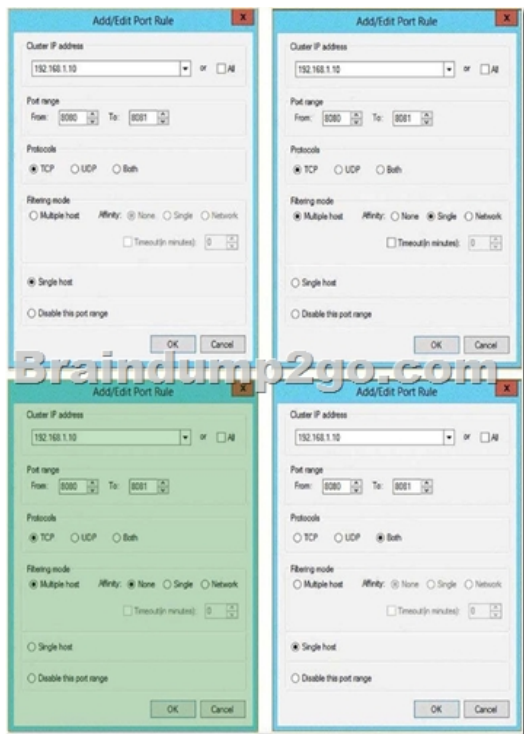
DNS is configured as shown in the DNS exhibit. (Click the Exhibit button.)



You need to ensure that DC1 and DC2 can replicate immediately. Which two actions should you perform? (Each correct answer presents part of the solution. Choose two.) A. From DC1, restart the Netlogon service. B. From DC2, run nltest.exe /sync. C. From DC1, run ipconfig /flushdns. D. From DC1, run repadmin /syncall. E. From DC2, run ipconfig /registerdns. F. From DC2, restart the Netlogon service. Answer: DE Explanation: The DC2 name/alias is not available in DNS. First we register the DC2 name from DC with the ipconfig /registerdns. (E) Then we synchronize a specified domain controller DC1 (DC2 would also work) with all of its replication partners with repadmin /syncall. (D) QUESTION 217 You have a server named Server1 that runs Windows Server 2012 R2. You start Server1 by using Windows PE. You need to repair the Boot Configuration Data (BCD) store on Server1. Which tool should you use? A. Bootim B. Bootsect C. Bootrec D. Bootcfg Answer: C QUESTION 218 Your network contains an Active Directory domain named contoso.com. The domain contains two member servers named Server1 and Server2. All servers run Windows Server 2012 R2. Server1 and Server2 have the Failover Clustering feature installed. The servers are configured as nodes in a failover cluster named Cluster1. Cluster1 contains a Clustered Shared Volume (CSV). A developer creates an application named App1. App1 is NOT a cluster-aware application. App1 stores data in the file system. You need to ensure that App1 runs in Cluster1. The solution must minimize development effort. Which cmdlet should you run? A. Add-ClusterServerRole B. Add-ClusterGenericServiceRole C. Add-ClusterScaleOutFileServerRole D. Add-ClusterGenericApplicationRole Answer: D Explanation: \* Add-ClusterGenericApplicationRole Configure high availability for an application that was not originally designed to run in a failover cluster. \* If you run an application as a Generic Application, the cluster software will start the application, then periodically query the operating system to see whether the application appears to be running. If so, it is presumed to be online, and will not be restarted or failed over. QUESTION 219 Hotspot Question Your network contains three Application servers that run Windows Server 2012 R2. The Application servers have the Network Load Balancing (NLB) feature installed. You create an NLB cluster that contains the three servers. You plan to deploy an Application named App1 to the nodes in the cluster. App1 uses TCP port 8080 and TCP port 8081. Clients will connect to App1 by using HTTP and HTTPS. When clients connect to App1 by using HTTPS, session state information will be retained locally by the cluster node that responds to the client request. You need to configure a port rule for App1. Which port rule should you use? To answer, select the appropriate rule in the answer area.



Answer:



Explanation: This should be the one on the lower left side. - You connect only by TCP not UDP. So Protocol needs to be TCP only-connections must be distributed evenly between hosts: So you need to choose 'multiple host' and not 'Single Host'. - 'App1 does not use session state information'. So Affinity must be 'none'. I guess 8080 is for HTTP and 8081 for HTTPS in this configuration. HTTP/HTTPS use TCP, not UDP. Multiple Hosts and Single for Affinity. - Multiple Hosts is Load Balancing evenly. When you select this, NLB Weight property matters. - Single Host is Active/Standby or Active/Passive. When you select this, NLB Handling Priority matters. The highest priority will serve all requests. - Affinity: None: Distribute evenly. Single: When a client is connected to a particular NLB node, the client is connected to the same node next time. This is used for Stateful connection such as request requiring HTTP session information. Network: Similar to Single, but distribute request by Network ID. Hash IP network id (class A, B, C, etc) to a hash and distribute the request to a particular node. Useful to assign a group of request from same IP network range or class. QUESTION 220 Hotspot Question Your network contains an Active Directory domain named contoso.com. The domain contains two servers named Server1 and Server2 that run Windows Server 2012 R2. The servers have the Hyper-V server role

installed. A certification authority (CA) is available on the network. A virtual machine named vm1.contoso.com is replicated from Server1 to Server2. A virtual machine named vm2.contoso.com is replicated from Server2 to Server1. You need to configure Hyper-V to encrypt the replication of the virtual machines. Which common name should you use for the certificates on each server?  
To answer, configure the appropriate common name for the certificate on each server in the answer area.


Server name	Common name
Server1	server1.conto server2.conto vm1.contoso. vm2.contoso.
Server2	server1.conto server2.conto vm1.contoso. vm2.contoso.

Answer:

Server name	Common name
Server1	<input type="text" value="server1.contoso.com"/> server1.contoso.com server2.contoso.com vm1.contoso.com vm2.contoso.com
Server2	<input type="text" value="server2.contoso.com"/> server1.contoso.com server2.contoso.com vm1.contoso.com vm2.contoso.com

Want to be 70-412 certified? Using Braindump2go New Released 70-412 Exam Dumps Now! We Promise you a 100% Success Passing Exam 70-412 Or We will return your money back instantly!

**Configuring Advanced Windows Server 2012 R2 Services**  
**Exam: 70-412**



**Product Description Exam Number/Code: 70-412**  
**Exam Number/Code: 70-412**

"Configuring Advanced Windows Server 2012 R2 Services Exam", also known as 70-412 exam, is a Microsoft Certification. With the complete collection of questions and answers, Braindump2go has assembled to take you through 392 Q&As to your 70-412 Exam preparation. In the 70-412 exam resources, you will cover every field and category in Microsoft Others Microsoft Certification helping to ready you for your successful Microsoft Certification.

Questions and Answers : 392  
Q&As  
Updated: Sep 22, 2015  
\$429.99 **\$99.99**

[PDF DEMO](#)

[CHECK OUT](#)

**Free Demo Download**

Braindump2go offers free demo for 70-412 exam (Configuring Advanced Windows Server 2012 R2 Services Exam). You can check out the interface, question quality and usability of our practice exams before you decide to buy it.

**Printable PDF**  **Premium VCE + VCE Simulator**

FREE DOWNLOAD: NEW UPDATED 70-412 PDF Dumps & 70-412 VCE Dumps from Braindump2go:  
<http://www.braindump2go.com/70-412.html> (392 Q&As)